

Installing of Wavin Sentio PC-tool:

Thank you for using the Wavin Sentio system. This document describes the how to connect the Sentio control unit to your PC and how to install the Wavin Sentio PC-tool incl. installation of the necessary drivers.

Prerequisites

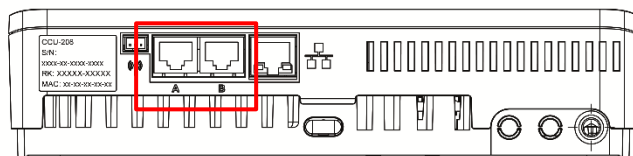
- PC/laptop with Windows 10
- Sentio Connection cable for PC
- Sentio Control unit
- Sentio PC-tool

Download and copying the program on to computer

- Download the program for the Wavin homepage
- Copy the down loaded program package onto to the desired place at your hard disk
- Un-zip the software package

Connecting the computer and Sentio Control unit

- Connect the Sentio Connection cable to an USB connector at your computer
- Connect the RJ-45 connector to the RJ-45 connector A or B at the button of the control unit.

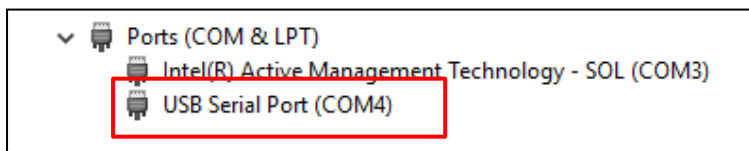


- Power up the Sentio Control unit

Installation of drivers

When powering up the Sentio Control unit the needed drivers for the program should automatically be installed. The installation can take some minutes to complete.

To check if the driver is successfully installed, you can navigate to the Device manager in Windows and make sure that the “USB Serial Port(Com xx)” is there.



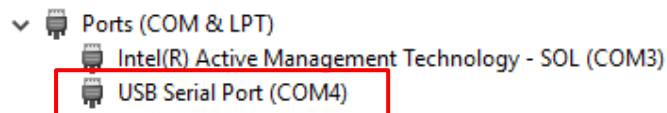
If the driver is installed, you can now run the program Sentio PC-Tool by clicking at “TS63008.4.exe”

If the driver was not installed correctly

If there in the Device manager in Windows is shown that the driver is installed but there is no Com port (Small yellow triangle), please try to restart your computer.



1 Before re-start

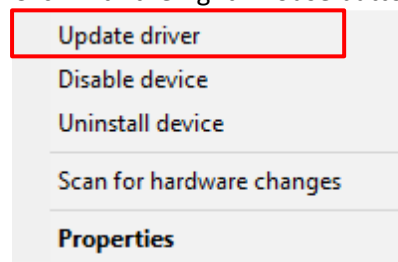


2 After restart

If the driver is installed correctly, you can now run the program Sentio PC-Tool by clicking at "TS63008.4.exe"

Unknown device detected

Click with the right -mouse button on the device and choose to update the driver.



Select "Browse my computer for driver software"

How do you want to search for drivers?

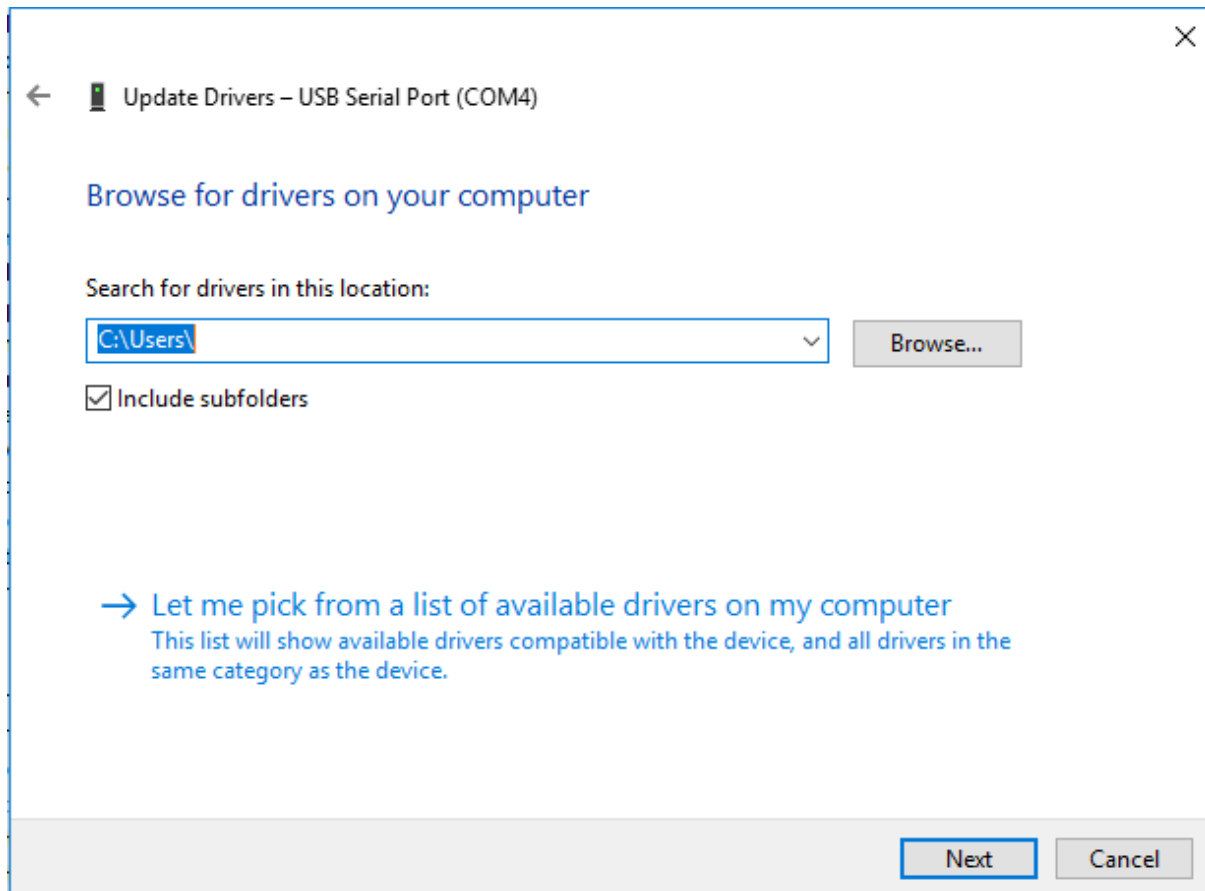
→ Search automatically for updated driver software

Windows will search your computer and the Internet for the latest driver software for your device, unless you've disabled this feature in your device installation settings.

→ Browse my computer for driver software

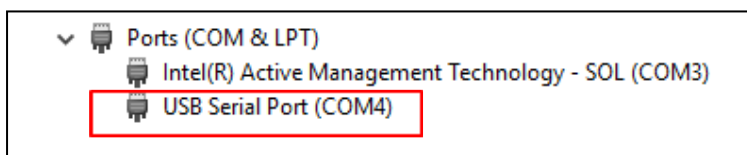
Locate and install driver software manually.

Select the path where you extracted the Wavin Sentio PC-tool to. Check the box "Include sub-folders"



Press "next" button and Windows will find and install the driver.

To check if the driver is successfully installed, you can navigate to the Device manager in Windows and make sure that the "USB Serial Port(Com xx)" is there.



If the driver is installed, you can now run the program Sentio PC-Tool by clicking at "TS63008.4.exe"