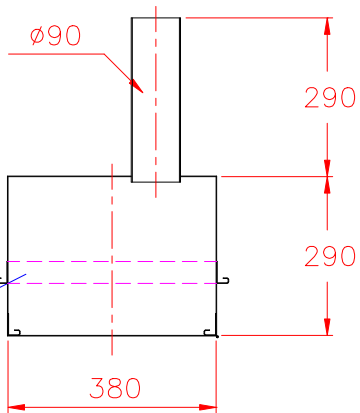
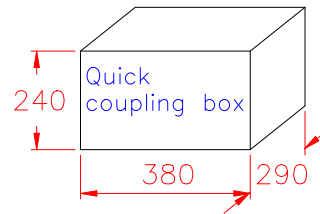
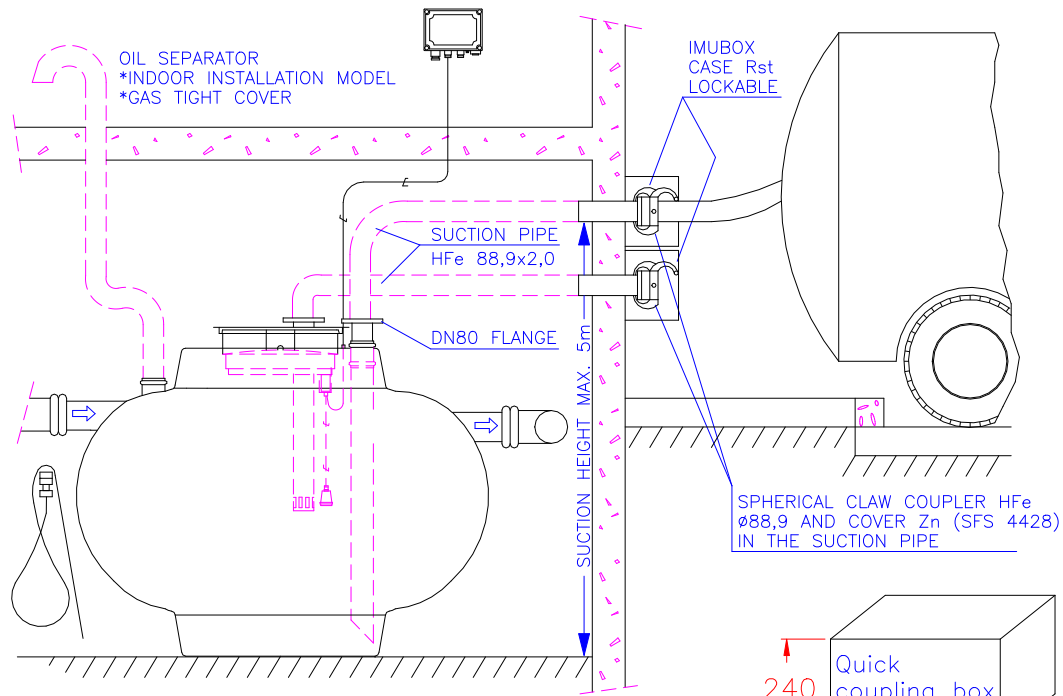


IMUBOX Quick coupling box

NOTE! If you make any changes on the drawing, mark (X) in the square.
Changes made on the drawing:



The movable mounting collar is installed to the desired location on the outside of the box and fastened with pop rivets at the installation site.

1. With IMUBOX quick coupling box oil separators and grease separators installed indoors can be emptied from the outside. IMUBOX is made from stainless steel and it includes a spherical HFe $\varnothing 88,9$ claw coupler and Zn cover SFS 4428. On the inner surface of the hinged cover are the instructions for emptying the separator.

2. EMPTYING, OPERATION AND MAINTENANCE INSTRUCTIONS FOR THE INDOOR INSTALLATION MODEL SEPARATOR


In case the separator can't be installed in the ground outside the building, i.e. renovation sites or premises where is no free land area available, the separator can be installed indoors. When a grease separator is installed indoors, it is equipped with a solid suction pipe, which drains the whole storage volume from the bottom of the tank. Oil separators are equipped with two suction pipes of which one pipe drains the oil layer (hazardous waste) from the oil storage space and the other pipe drains the whole storage volume from the bottom of the tank.

IMUBOX quick coupling box should be installed in a place where it is easily accessible for the emptying truck.

The separator should be installed in an air-conditioned room where it can be maintained through a manhole. For successful maintenance it is recommended to place the separator close to a hot water hose connection point, which can be used to clean the dirt from separator walls and bottom. Removing dried and solidified grease requires special actions. Cleaning operation through a manhole must be done at least once a year.

The installation room of the separator must be sewered. Indoor installation requires a gas tight cover.

Notes: _____

Wavin no.	Title: IMUBOX Quick coupling box					Drawing type CUSTOMER DRAWING
Design by: AL/JS/EIK	Checked by:	Approved by: HT 7.8.2014	Drawing no. 98AB01ae	page: /	Date: 6.8.2014	Scale:
			Construction site: WAVIN-LABKO Visiokatu 1 FIN-33720 Tampere FINLAND Tel. +358-20-1285 200 Fax +358-20-1285 280 www.wavin-labko.fi			